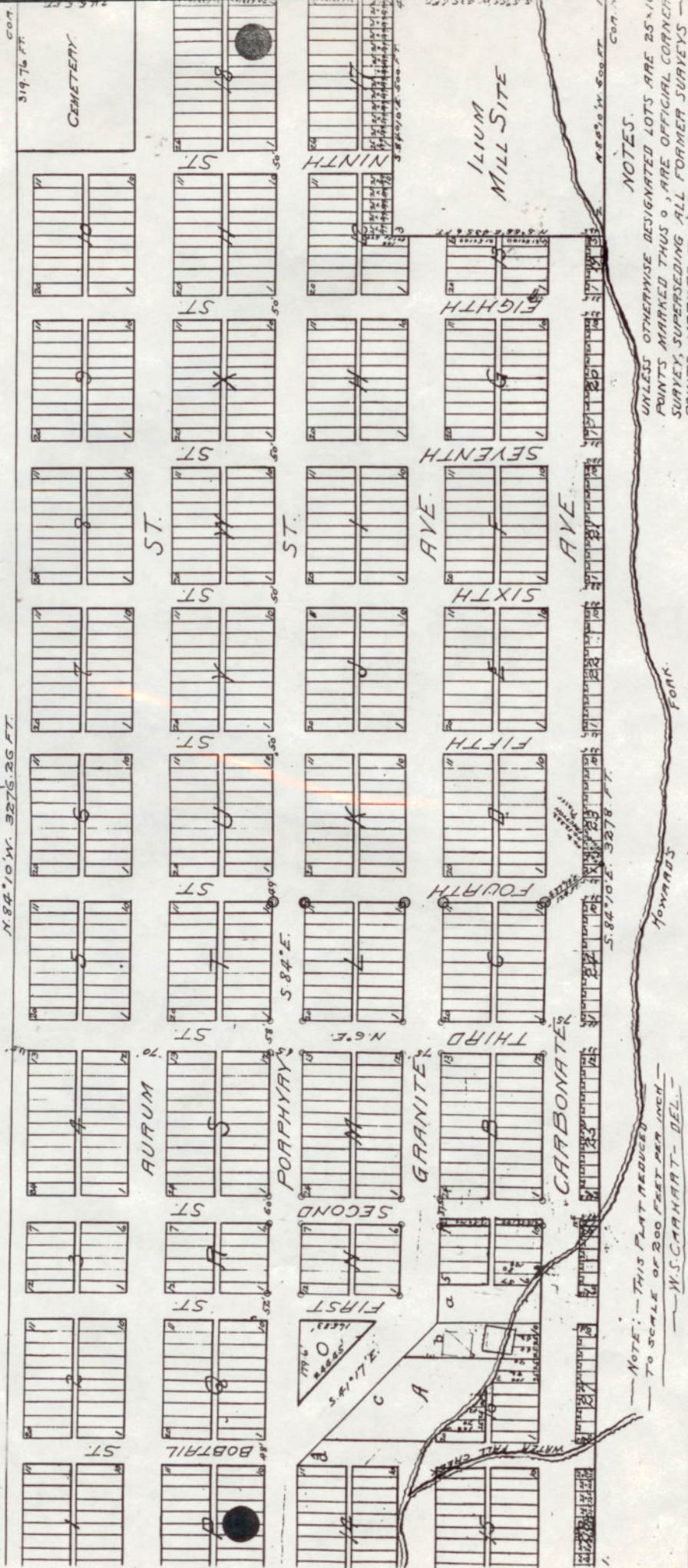


OPHIR TOWNSITE

100 FT = 1 IN

N. 84° 10' W. 3276.26 FT.

3.4.



NOTES.
UNLESS OTHERWISE DESIGNATED LOTS ARE 25' X 100'.
POINTS MARKED THUS ○, ARE OFFICIAL CORNER SURVEY, SUPERSEEDING ALL FORMER SURVEYS -
POINTS MARKED THUS ⊙, ARE ONE FOOT, N. 8

STAT: ...
COUNT: ...
189 ...
Block ...
Feet ...

FOR SALE VACANT
FOR SALE RESIDENTIAL

Handwritten notes and signatures in the right margin, including a signature that appears to be 'P. P. ...' and some illegible text.